

Trapa natans

Common names:

Water chestnut
European water chestnut

Origin:

Asia and Europe

Key features:

Plants are rooted to substrate and float

Stems: Stem is submersed, flaccid and can be up to 15 feet (5 m) long

Leaves: Leaves 0.8-0.16 inches (2-4 cm) long are triangular and toothed along the front edge with inflated petioles, leaves float in a rosette pattern

Flowers: Flowers are located in the center of the rosette and have four white petals

Fruits/Seeds: Fruit is hard and has four sharp spines

Reproduction: Seeds and fragmentation

Easily confused species:

None



Photo by Leslie J. Mehrhoff

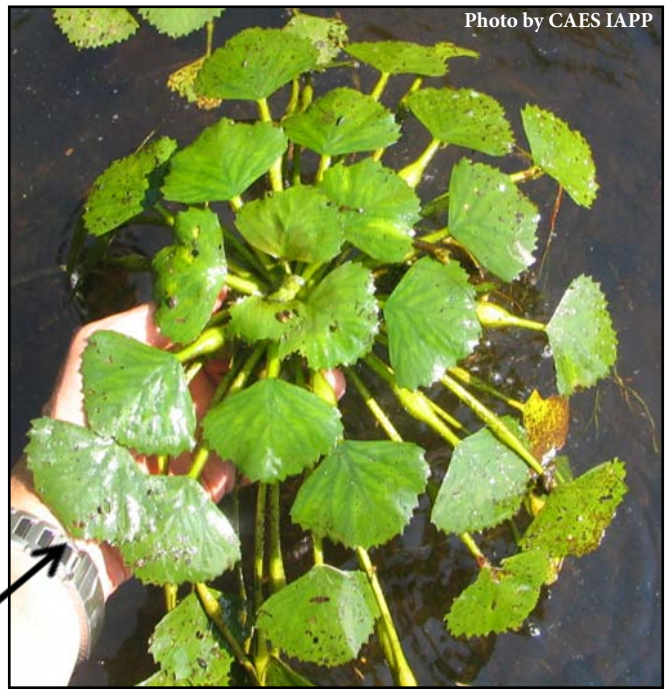


Photo by CAES IAPP

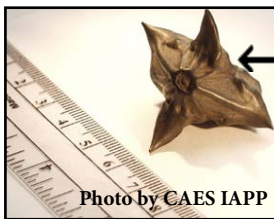


Photo by CAES IAPP

← **Fruit**

Rosette →



Photo by Leslie J. Mehrhoff

